

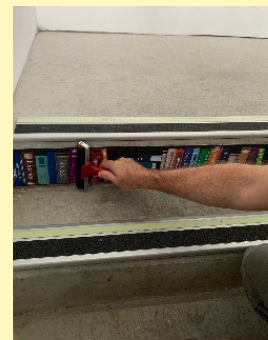
How to install Stair Graphics



Before beginning to install the stair graphics it is important to clean the stairs thoroughly. The better you prepare the application surface the longer the stickers will last. Wash the stair face with soap and water to remove any dirt or loose material then rinse off with clean water and allow to dry completely.



- 1 Check the graphic fits your stair face before starting.
- 2 Working from the side with the sticker face down on a clean surface, peel the first 20cm of sticker away from the backing paper and fold the backing paper back against itself.
- 3 Position the exposed adhesive section at the start of your stair face and gently smooth it into place with your hand. Check you are happy with the position. At this stage you can gently remove and reposition if needed.
- 4 Slowly remove the remaining backing paper and as you go gently smooth the sticker onto the stair face. Once completely in position you can use a small rubber roller to firmly fix the graphic in place. Pay particular attention to the edges, making sure they are firmly rolled to fix in place. (Please see our website to order our Stair Graphic Rubber Application Roller)
- 5 Repeat the process on each step until you have completed installation.
- 6 Check the steps regularly over the next week and repeat rubber rolling to make sure they are firmly in place. The adhesive fully fixes with pressure after 24-72 hours depending on temperature.



Care Instructions:

The graphics can be washed with gentle soap and water, no harsh chemicals or firm brushes should be used.

Extending the life:

Super glue gel can be used to secure any corners or edges that start to lift. A couple of drops on the back of the graphic and a firm roll of the edges to secure.